



TK International  
020 7794 8700  
www.t-k.co.uk

Residential Sales  
Residential Lettings  
Property Management

Sales Office:  
9 Heath Street  
Hampstead  
London NW3 6TP  
E: sales@t-k.co.uk

Lettings Office:  
16-18 Heath Street  
Hampstead  
London NW3 6TE  
E: lettings@t-k.co.uk

tk.international  
TK International  
TK International

Est.  
1998



## Nutley Terrace Hampstead NW3

A striking three bedroom, two bathroom contemporary duplex penthouse apartment with a floor area measuring 2,150 sq ft, showcasing unique imaginative interior design throughout, enviably served by direct lift access and benefiting from secure underground parking for two cars.

A particularly appealing feature of this exceptional home is the generously proportioned 35' x 20' double reception/dining room on the top floor of the apartment, providing wonderful space for entertaining and exceptional views towards central London. This floor is also home to the principal bedroom suite with excellent storage and a spacious six-piece ensuite bathroom in addition to a separate kitchen, a further entertaining room and a guest cloakroom. The lower floor also comprises two further double bedrooms and a family bathroom.

Nutley Terrace is a highly desirable residential street, idyllically situated within easy reach of the various boutiques, cafes, restaurants and art galleries in Hampstead Village, Belsize Park, Belsize Village and Swiss Cottage. The locality is served also extremely well connected by Northern Line, Jubilee Line & Metropolitan Line underground stations, each within walking distance.

**£2,150,000**

**SOLE AGENT**

**Share of Freehold**

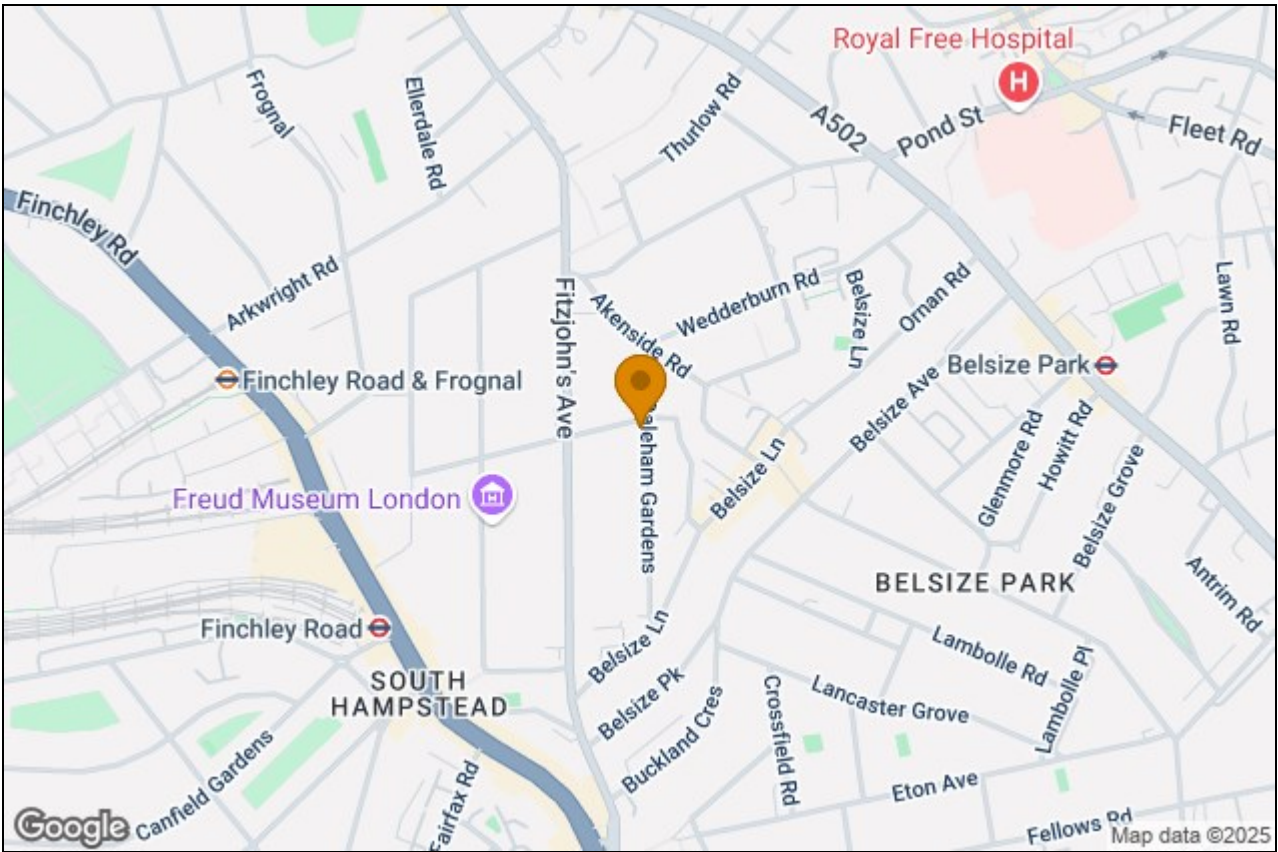








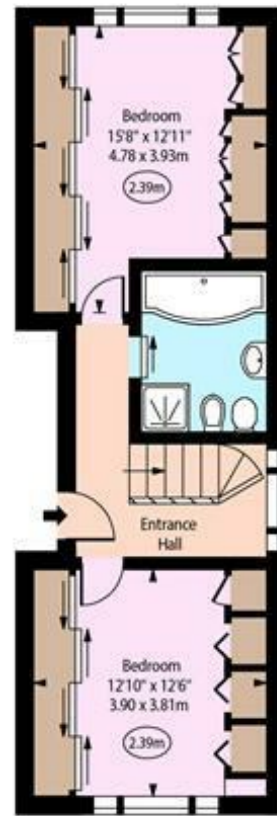




Nutley Terrace, NW3



○ - Ceiling Height



Second Floor



Third Floor

Approx Gross Internal Area 2078 Sq Ft - 193.05 Sq M

(Excluding Void & Lift)

Approx. Floor Area Including Restricted Heights 2150 Sq Ft - 199.74 Sq M

(Excluding Void & Lift)

For Illustration Purposes Only - Not To Scale

www.goldfens.co.uk

Prepared for TK International

Ref. No. 026153R